

Equiplite® Halyard-Swivel CP (Compression-Pin) Installation and data sheet.

Dear Customer,

Thank you for purchasing this Equiplite® product.

General

Equiplite® products employ a proprietary SK loop to take the majority of the load in the Halyard -Swivel 2.0

- Break Load= 2 x MWL.
- SK 90 fibre Loop, Marine anodised Hi Tensile Aluminium Body.

Installation

IMPORTANT PLEASE READ

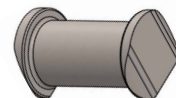
Swivel Connector 2.0

Line size is **noted** on the swivel label in mm, feed full covered eye splice through the center and secure with the Compression-Pin provided. Tube Ø designs for a spliced _____ mm Ø line, It is **important** that the line fits **tightly** in center tube. When using a strop, not a CP (compression pin), but a GP (groovy pin) is needed. For details, contact Equiplite Europe.

Breaking strength will be **significantly** reduced if line diameter used in fitting is smaller and does not fill the center tube.

1. Make sure hole is rounded and free of burrs and sharp edges.
2. The fibres are coated with a UV polyurethane coating.
This coating should be renewed when it wears, for a long life.

Fittings will last indefinitely if the above is followed.



Maintenance

- After sailing in salt water, cleaning loops with fresh water will avoid extra wear.
- Loops should be replaced if excessive wear occurs and mating parts should be checked.
- Equiplite® provides worldwide service for your Equiplite® products.

Order spare parts: service@equiplite.com

We hope that this data sheet will help you with the easy installation and maintenance of our products.

Best Regards,
Equiplite®

