

Equiplite® TS LION™ CP (Compression-Pin) Installation and data sheet.

Dear Customer,

Thank you for purchasing this Equiplite® product.

General

Equiplite® products employ a proprietary SK loop to take the majority of the load in the LION™ Top Swivel 2.0

- Break Load= 2 x MWL.
- SK fibre Loop, Marine anodised Hi Tensile Aluminium Body.
- Reduce load to approx ½ MWL for best furling

Installation

IMPORTANT PLEASE READ

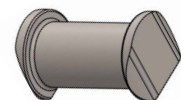
LION™ Top Swivel

Line size is **noted** on the swivel label in mm, feed full covered eye splice through the center and secure with the Compression-Pin provided. Tube Ø designs for a spliced ____ mm Ø line, It is **important** that the line fits **tightly** in center tube. When using a strop, not a CP (compression pin) but a GP (groovy pin) is needed. For details, contact Equiplite®, service department.

Breaking strength will be **significantly** reduced if line diameter used in fitting is smaller and does not fill the center tube.

1. Make sure hole is rounded and free of burrs and sharp edges.
2. The fibres are coated with a UV polyurethane coating.
This coating should be renewed when it wears, for a long life.

Fittings will last indefinitely if the above is followed.



Maintenance

- After sailing in salt water, cleaning loops with fresh water will avoid extra wear.
- Loops should be replaced if excessive wear occurs and mating parts should be checked.
- Equiplite® provides world-wide service for your Equiplite products.

Order spare parts: service@equiplite.com

We hope that this data sheet will help you with the easy installation and maintenance of our products.

Best Regards,
Equiplite®

