



Equiplite™ Top-down furling | system



Equiplite™ Top Down-Kit: is the lightest in weight, efficient and lightest in furling...

Equiplite™ Top Down furling systems use DSK 75 ULTRA. Top down furling is not a new idea, it has been used on small MPS Gennaker for many years. The development of the new advanced Equiplite top-down furling system technology however, has now opened up the opportunity for grand prix race teams and superyachts to benefit from the increased performance, handling and safety aspects of these systems.

They typically weigh at least 60 % less than competitive assemblies of the same load specifications

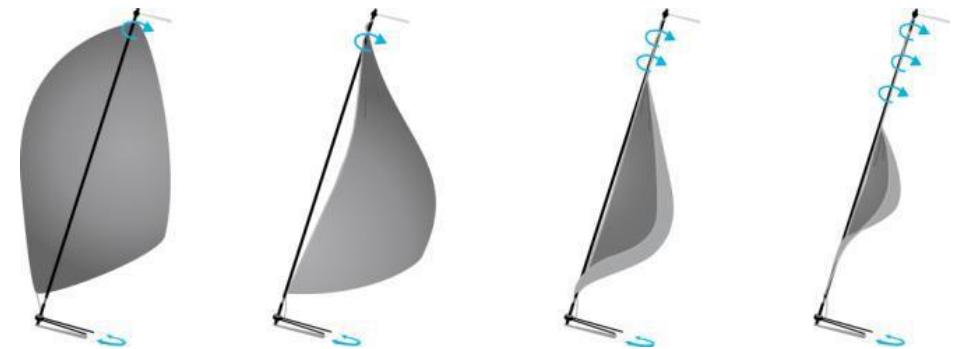
How does the top-down drum system work

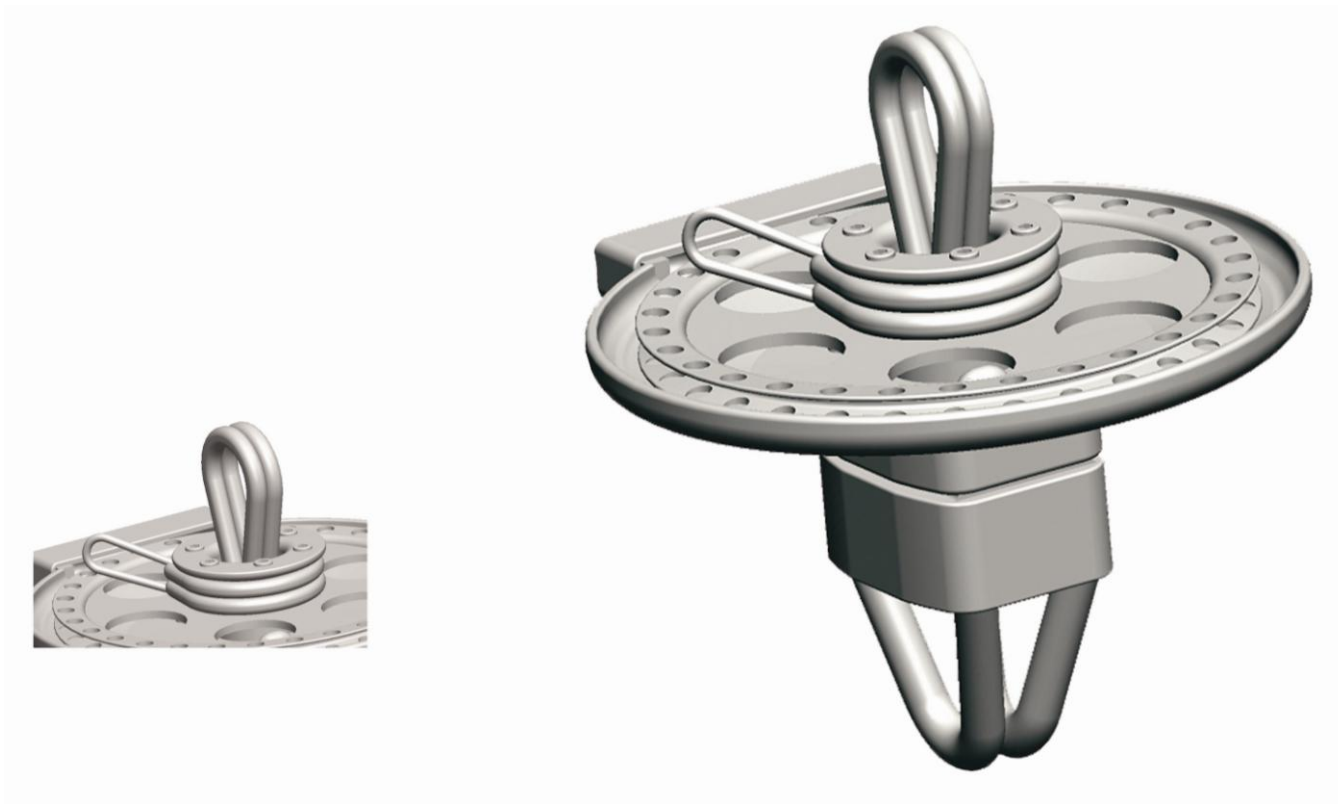
Top-down furling is for use with loose Luff asymmetric sails. The head of the sail is attached, with the top of the anti-torsion furling cable, to an Equiplite top swivel unit which is hoisted up the mast on a halyard.

The bottom of the cable is attached to the Equiplite top-down furling drum at the bow. The tack of the sail attaches to a freely rotating swivel above the furling unit with an Equiplite quick loop.

When the furling drum is turned, the bottom of the cable turns but the bottom of the sail does not. The torque commences the furl, starting up the full length of the cable where it quickly starts to turn the head of the sail. The furl pulls in the luff and leech of the sail and the Gennaker is literally zipped close, from the head down the Luff.

The loads on these systems are much less than on straight luff sails such as Code 0's which translates into a much less expensive system because, with the top-down modification kit, your Equiplite Code 0 furler can also be used for Gennaker furling.





NEW TOP-DOWN KIT

All prices are net prices in Euro.
 All data approx and subject to change without notice.
 Other sizes available on special order.

Unspecified dims. mm.
 Break load approx. 2 x MWL

DRUM TOP-DOWN KIT | Custom | Excl. Installation

Part	Wt. (g)	Drum Ø (mm)
1.7 FS-TDK		90
2.6 FS-TDK		100
3.6 FS-TDK		123
4.7 FS-TDK		156
6 FS-TDK		156
8 FS-TDK		190
10 FS-TDK		223