

# Equiplite®

## TS LION™ GP (Groovy Pin) Installation and data sheet.

Dear Customer,

Thank you for purchasing this Equiplite® product.

### General

Equiplite® products employ a proprietary SK loop to take the majority of the load in the LION Top Swivel 2.0

- Break Load= 2 x MWL.
- SK fibre Loop, Marine anodised Hi Tensile Aluminium Body.
- Reduce load to approx ½ MWL for best furling.

### Installation

#### IMPORTANT PLEASE READ

LION™ Top Swivel

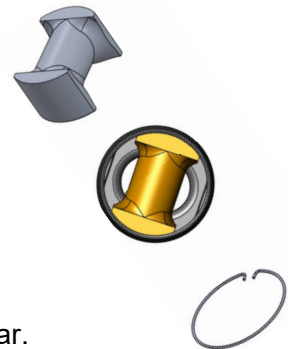
For use with 360 loop or Multiple strand rope loops, feed the loop through the centre and secure with the Groovy-Pin provided. Tube  $\varnothing$  is designed for a Max. Loop surface (cross section) MLS= \_\_\_\_ (mm<sup>2</sup>) line. It is **important** that the 360 loop fits **loosely** in the center tube. If necessary, contact Equiplite® for the optimum stop design.

Breaking strength will be **significantly** reduced if the loop cross section is larger than designed MLS and is compressed inside the center tube.

1. Make sure hole is rounded and free of burrs and sharp edges.
2. The fibres are coated with a UV polyurethane coating.  
This coating should be renewed when it wears, for a long life.

Fittings will last indefinitely if the above is followed.

3. Use GP spring retainer to secure the pin.



### Maintenance

- After sailing in salt water, cleaning loops with fresh water will avoid extra wear.
- Loops should be replaced if excessive wear occurs and mating parts should be checked.
- Equiplite® provides world-wide service for your Equiplite products.

Order spare parts: [service@equiplite.com](mailto:service@equiplite.com)

We hope that this data sheet will help you with the easy installation and maintenance of our products.

Best Regards,  
Equiplite®

